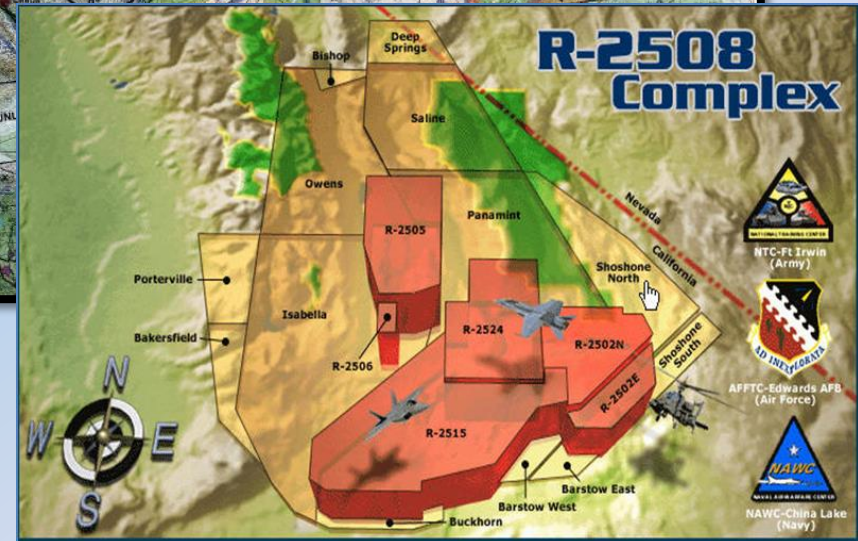
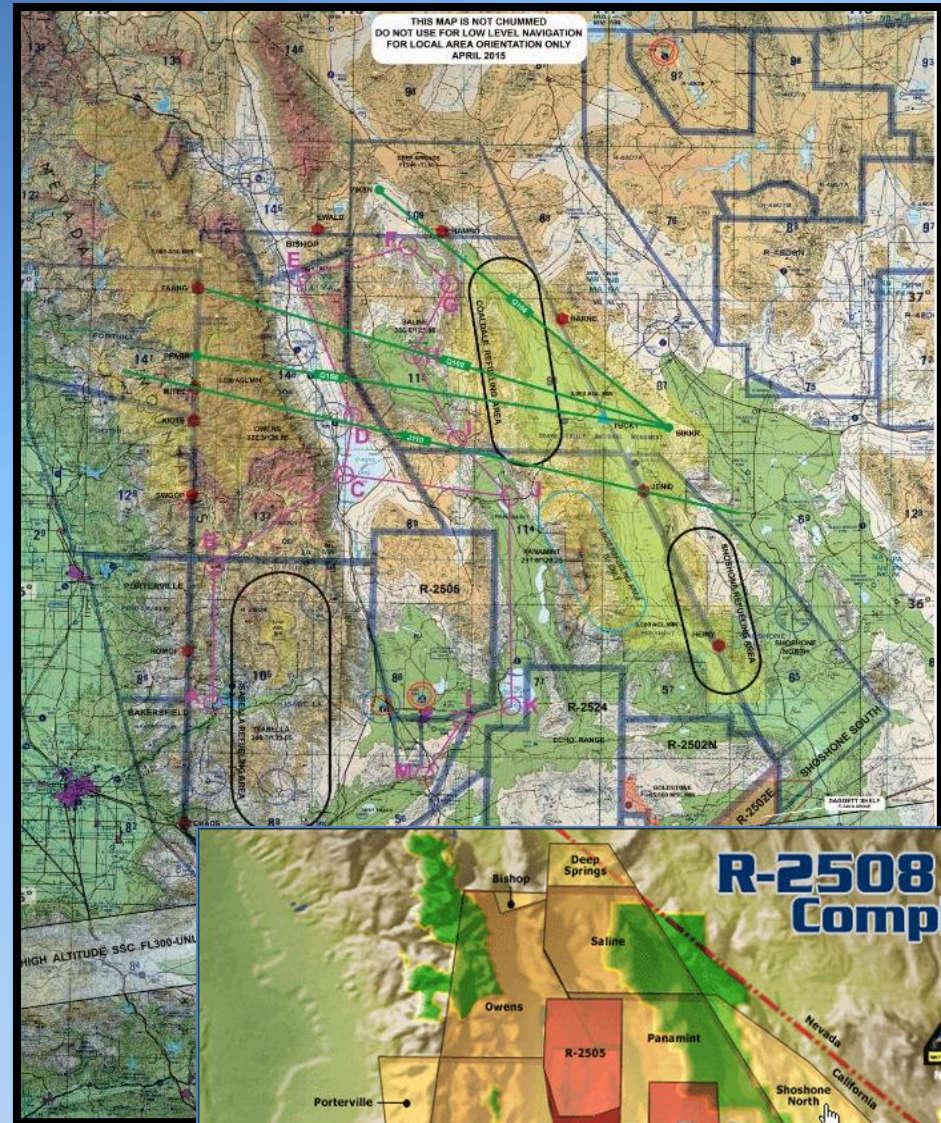




# R-2508 Annual Tanker Briefing 20 March 2018

## WELCOME!

- Airspace Layout
- Concept of Operations
- Overflight Restrictions
- Low level Procedures
- Standard Op Procedures
- Special Activities/Areas
- Scheduling/Flt Plans
- SITREPS
- On Line Info





# R-2508 Annual Tanker Briefing

## Restricted Areas:

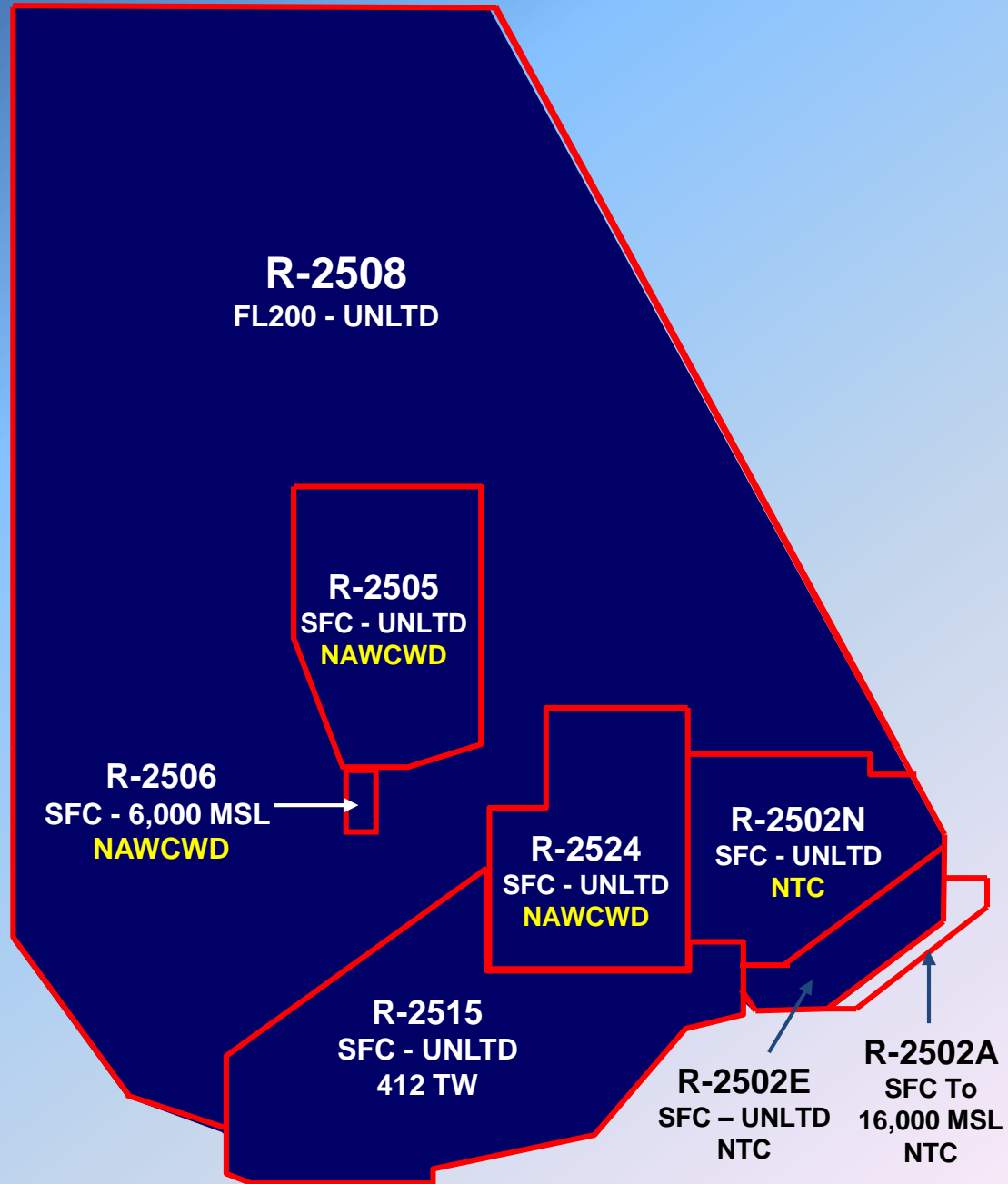
- Schedule R-2508 with CCF
- Schedule Internal Restricted Areas with Using Agency and CCF To Transit MOA/ATCAA Airspace

## Using Agencies:

R-2505, R-2506, R-2524: NAWCWD

R-2515: 412TW

R-2502N, R2502E, R-2502A: NTC





# R-2508 Annual Tanker Briefing

## MOA & ATCAA Airspace

Military Operations Areas & Air Traffic  
Control Assigned Airspace

## JOSHUA APPROACH

### Frequencies:

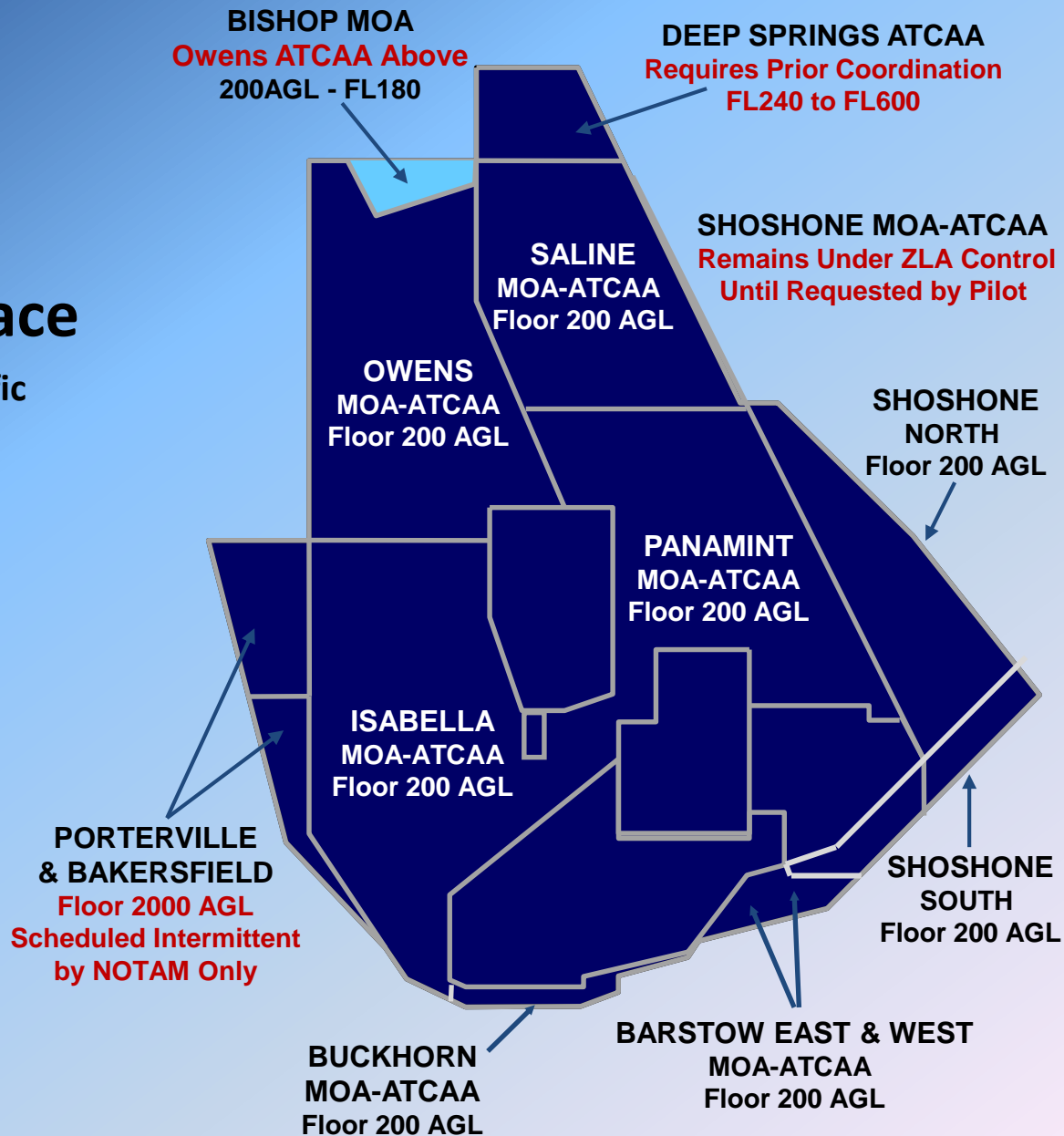
Joshua Primary ATC: 348.7/133.65

Isabella: 335.6/134.05

Owens: 322.3/126.55

Saline: 256.8/123.95

Panamint: 291.6/120.25





# R-2508 Annual Tanker Briefing

## Concept of Operations

When the SUA is Activated

- VFR
- See and Avoid
- Non-Exclusive Use
  - Transponder – Mode C
  - Accept Advisory Service
  - Active vs. Inactive Monitoring





# R-2508 Annual Tanker Briefing

## IFR Procedures

Not Authorized when SUA is Active

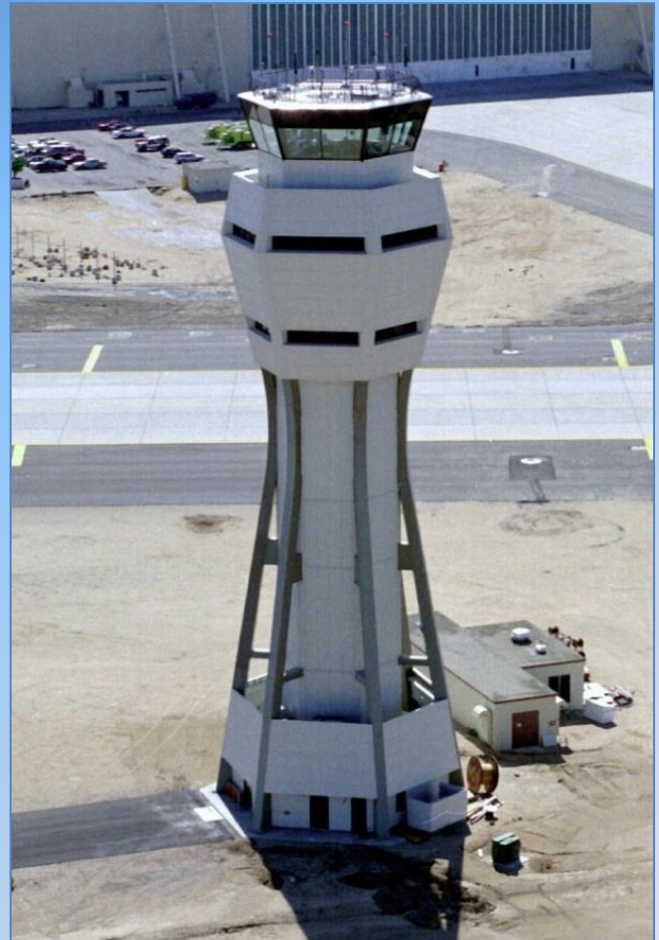
What to do if you encounter an  
IMC Condition...

- Advise Joshua Approach
- Expect IFR Clearance
  - On Top or Vectors to VMC
  - IFR Separation applied  
between IFR Aircraft only





# R-2508 Annual Tanker Briefing



## R-2508 Air Traffic Control (ATC) and Military Radar Unit (MRU) Services

- **Joshua Control Facility, “Joshua Approach”**
  - Traffic & boundary advisories, mission support
  - VFR and IFR Services as applicable within MOAs, ATCAAs, R-2508, and Released Internal Restricted Areas
- **China Control & SPORT MRU’s**
  - Traffic & boundary calls and mission support services for China Lake (R-2505, R-2506 & R-2524)
  - Edwards (R-2515 Barstow & Buckhorn MOA/ATCAA)
- **Desert Radio, Airspace Information Center**
  - Mission support in R-2502N, R-2502E & R-2502A



# R-2508 Annual Tanker Briefing



## Check in Procedures & Situational Awareness

- **Receive Clearance:** Contact Joshua Approach prior to Complex entry and exit. Initial contact shall include a request for a **Complex Clearance and Altitudes**.
- **Provide SA to ATC:** During check-in, pilots should state their intentions and planned work area using plain language.
- **Receive SA from ATC:** Joshua Approach should respond with **Work Area Clearance**, relevant **Traffic Information**, and, workload permitting, **work area saturation information**.
- **ATC traffic calls** are based on observed aircraft positions, headings, altitudes and radar limitations. **Rapid changes** in heading or altitude **may not be observed by ATC in time** for the information to be issued in a timely manner. **Aircrews** are encouraged to **Alert ATC** when conducting **rapid heading and/or altitude changes**.



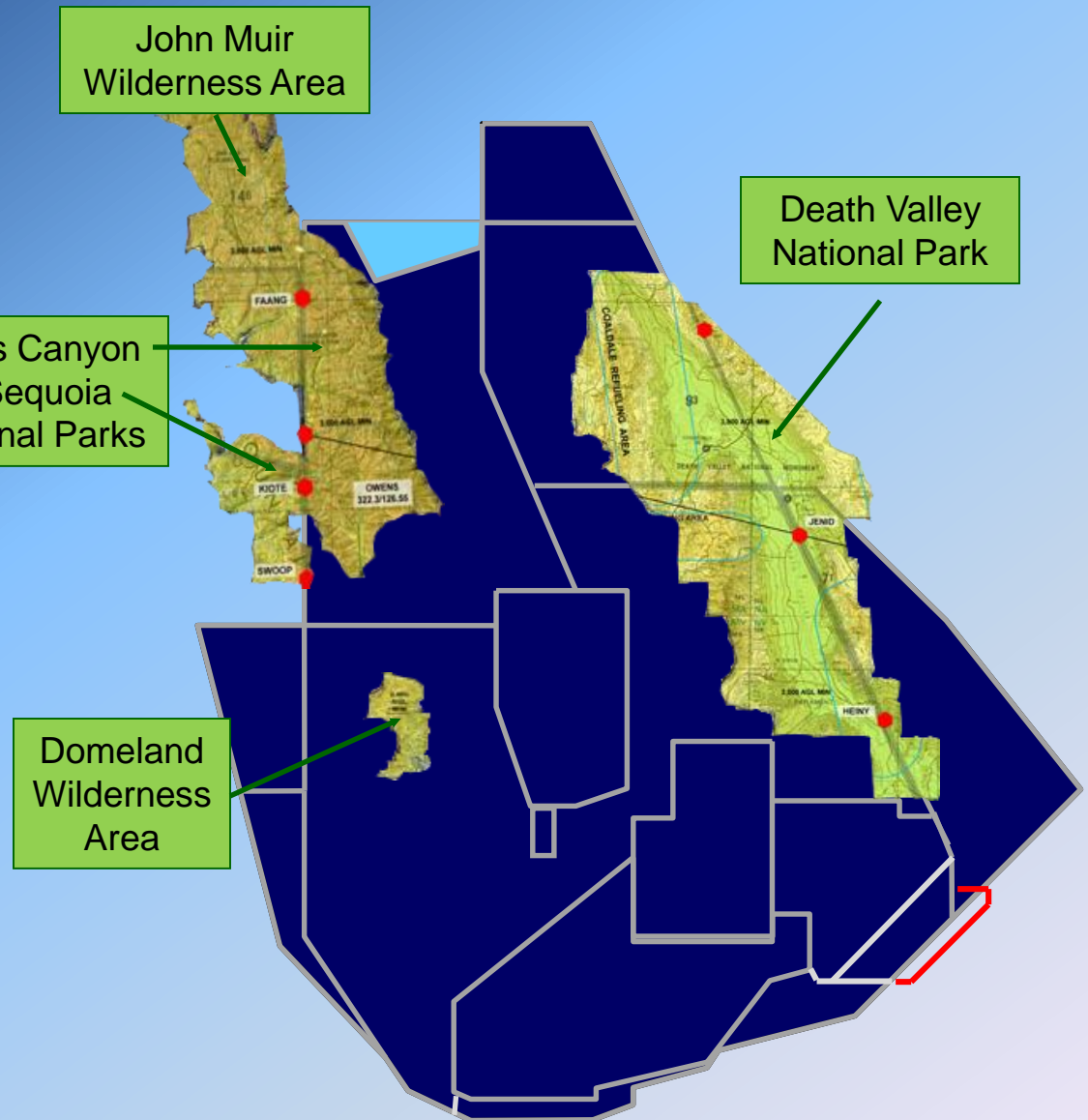


# R-2508 Annual Tanker Briefing

## Overflight Restrictions of Parks & Wilderness Areas

Floor of MOA over National  
Parks and Wilderness Areas  
Published Altitude: **3,000 AGL**

- FLIP AP1 California
- FAA JO 7400.8



**Remain at least 3,000 feet both Laterally and Vertically  
from National Parks and Wilderness Areas...  
3,000 feet from Canyon Walls and Saddles**





# R-2508 Annual Tanker Briefing

## SEKI



- **Sequoia and Kings Canyon National Parks (SEKI)**
  - All participating aircrews maintain an altitude of **18,000** feet or above over SEKI unless specifically scheduled lower through CCF.
    - Annotate “**SEKI**” in Remarks Section of R-2508 Complex Airspace request Form.
  - Unscheduled operations below FL180 over SEKI are authorized only for safety of flight considerations.
  - At no time will any participating aircraft descend below 3,000 feet AGL within the boundaries of SEKI except in an emergency situation. Lateral separation from SEKI is 3000 feet.





# R-2508 Annual Tanker Briefing

## • Temporary Flight Restrictions (TFRs)

- Land Management Activity
- Fire-fighting Support ACFT

**SMOKE FROM FIRES STAY  
AWAY!**

**Check NOTAMS Prior to Step  
Check R-2508 Daily Brief Sheet**





# R-2508 Annual Tanker Briefing

NAS Lemoore/Fresno ANG

## Ingress/Egress Routes

### • NAS Lemoore

- Entry/Exit via KIOTE & SWOOP
- Entry/Exit via ROMOF for Superior Valley at FL190/200 to avoid Isabella AR (ARISB)

### • Fresno ANG

- Entry/Exit via FAANG & MITEL
- Use FAANG to avoid Cap Points when active

### • Other Uses

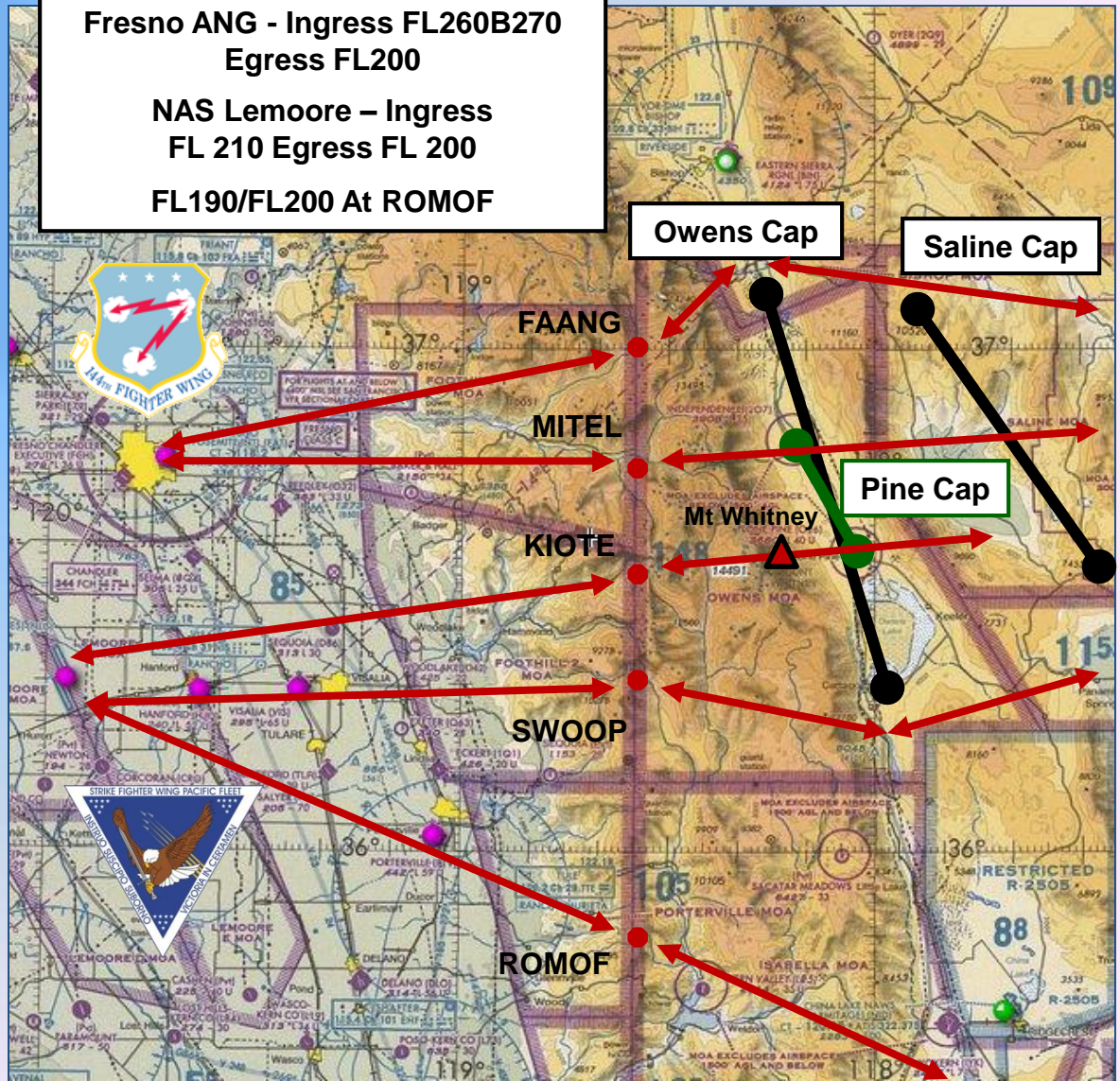
- Be aware of heavy East/West traffic flow across Owen Valley
- Avoid Mt Whitney area

**Entry/Exit Point Altitudes**

Fresno ANG - Ingress FL260B270  
Egress FL200

NAS Lemoore – Ingress  
FL 210 Egress FL 200

FL190/FL200 At ROMOF

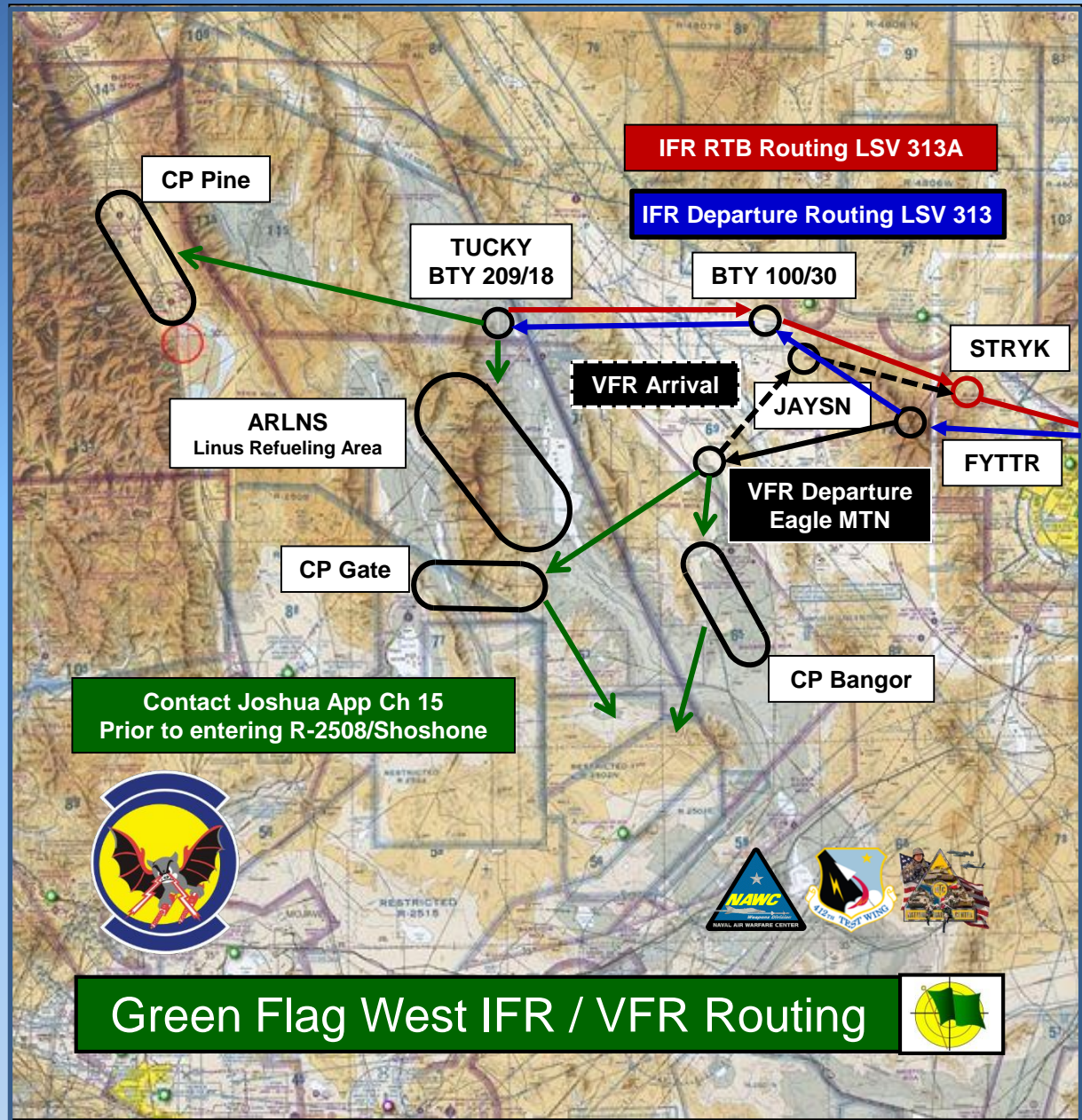




# R-2508 Annual Tanker Briefing

## Green Flag West

- **IFR Departure Routing...** via FYTTR..BTY 100/30..TUCKY
  - **IFR RTB Routing...** via TUCKY..BTY 100/30...STRYK
- 
- LSV VFR Departure Routing FYTTR..Eagle Mountain
  - LSV VFR RTB Routing Eagle Mountain..JAYSN..STRYK
- 
- Refueling Area LINUS (ARLNS) 22K'
  - Lone Pine CAS Orbit Hold at 21K' then operate 20K' to 200 AGL in Owens MOA/ATCAA

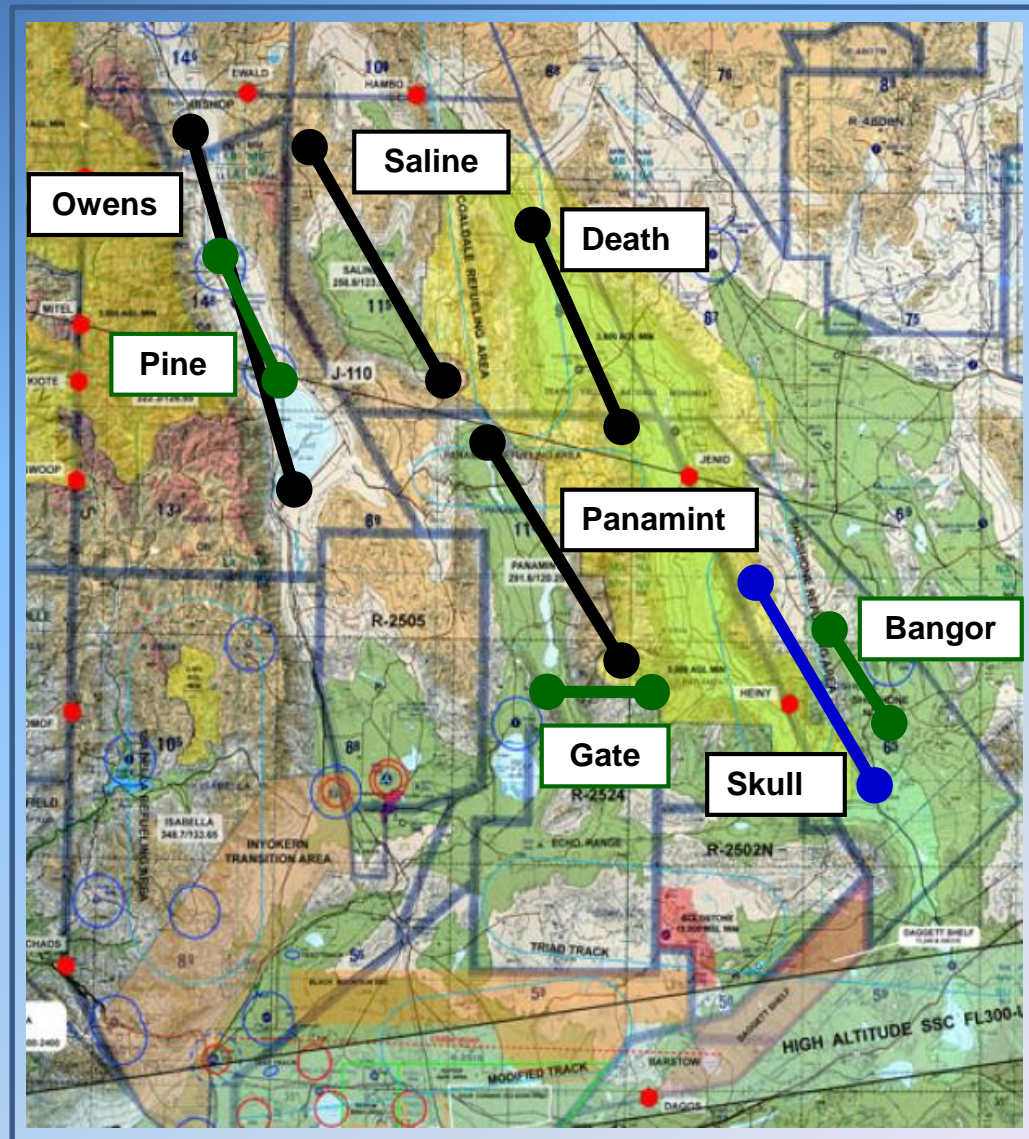




# R-2508 Annual Tanker Briefing

## Caps Points

- Used for staging and mission deconfliction.
- Aircraft transiting across working areas shall avoid aircraft actively conducting test or training whenever possible.
- NAS Lemoore - SFWP
  - Owens, Saline, Death, Panamint
- LSV - Green Flag West
  - Pine, Gate, Bangor
- 412 Test Wing
  - Skull

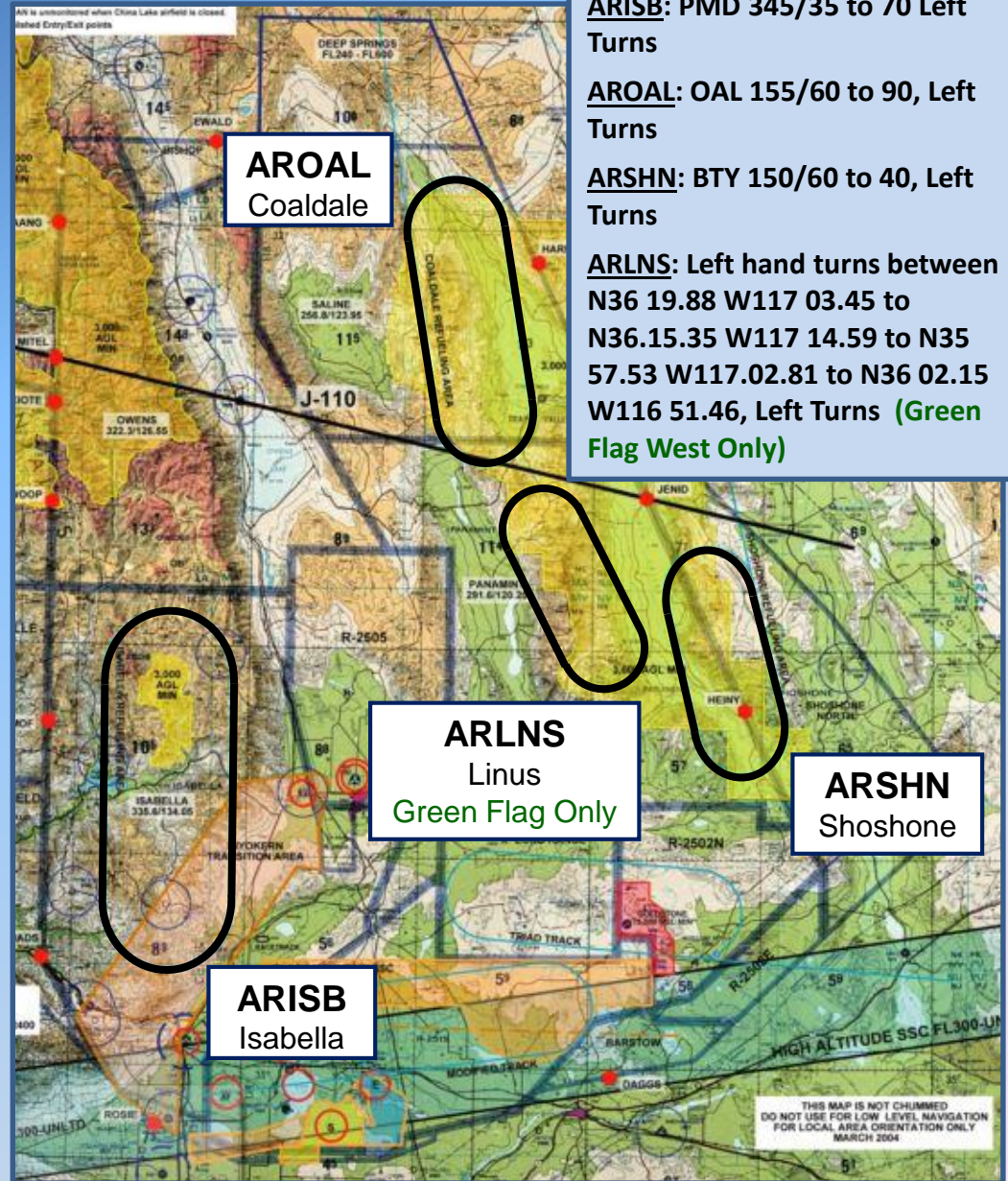




# R-2508 Annual Tanker Briefing

## Air-Refueling Operations:

- Refueling areas **NOT exclusive-use airspace** and **NOT PROTECTED** from other Complex aircraft operating in the area.
- Avoid observed tanking operations by a minimum of **2,000 feet vertically** and **5 miles laterally**.
- Standard ARISB Alt Blocks:  
FL210B230 / FL240B260 / FL270B290
- Tanker discrete squawks:  
0051-0057 (assigned by SPORT)  
5253-5257 (assigned by JOSHUA)
- 412 TW assigned/sponsored TNKRS:  
Mode 1: Squawk 02  
Mode 2: Squawk 7210



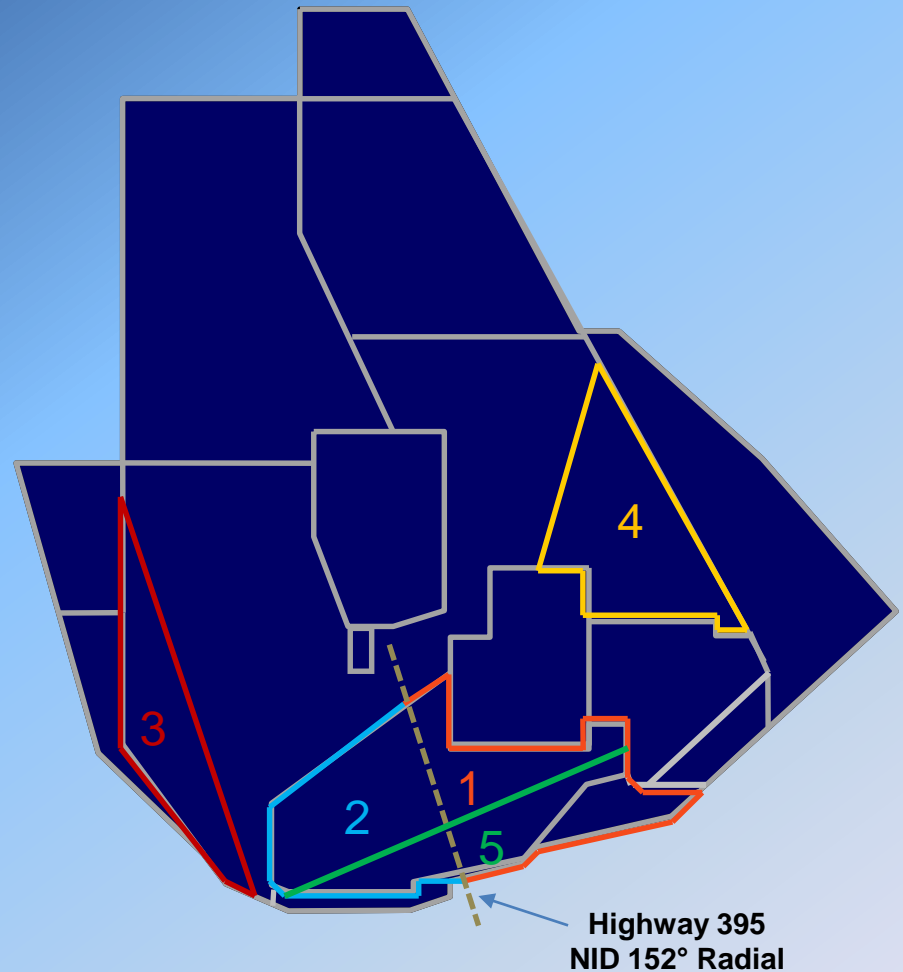


# R-2508 Annual Tanker Briefing

## Special Activity Areas...

### Weather Areas

- Area 1:** Eastern Half of R-2515 Divided by Highway 395
- Area 2:** Western Half of R-2515 Divided by Highway 395
- Area 3:** Isabella MOA/ATCAA West of the PMD 330° Radial
- Area 4:** Panamint MOA/ATCAA East of the BTY 182° Radial
- Area 5:** R-2515 South of the FIM 049° Radial & Barstow MOA/ATCAA



## What Users Should know...

- WX Areas exist in the Southern Portion of the Complex
- WX Areas are Released to ZLA for Air Carrier WX Avoidance
- Joshua/SPORT will keep users updated on areas activated
- If you're unfamiliar with WX Area locations advise Joshua or SPORT and request assistance in WX Area avoidance.





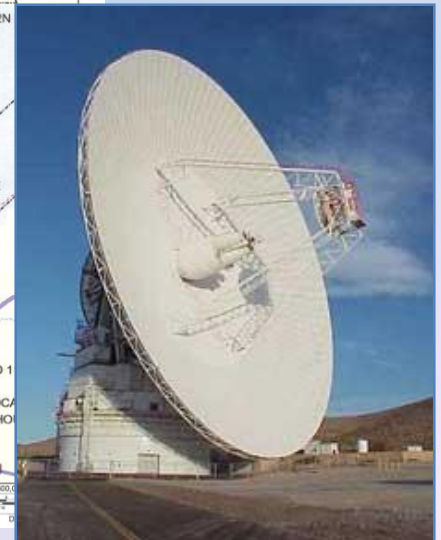
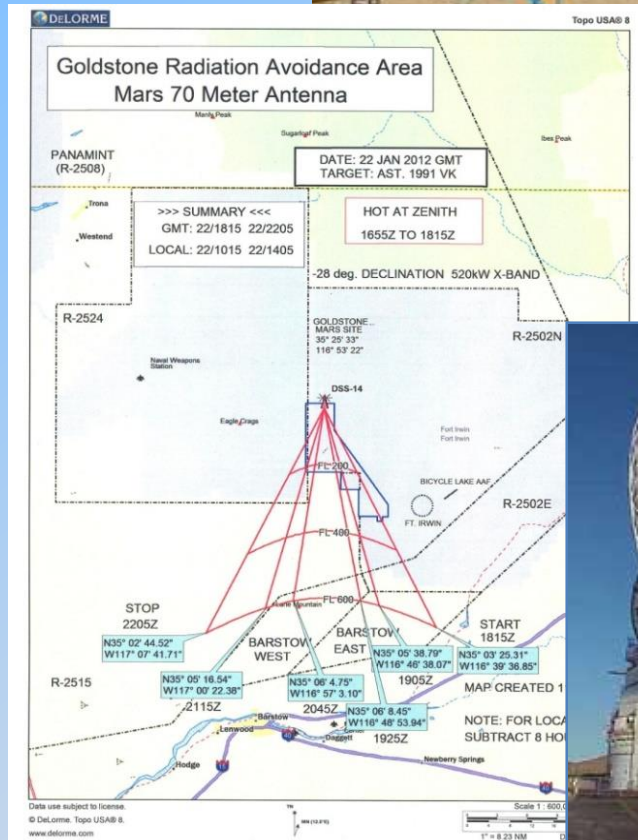


# R-2508 Annual Tanker Briefing

## Special Activity Areas

### NASA Goldstone Facility

- **Overflight Restriction**
  - 10,000 MSL or Higher as Scheduled
  - Goldstone provides ATC/MRU with radiation map to identify affected area, altitudes, and times when 70 meter dish is radiating
- Joshua, SPORT, China Control and Desert Radio will advise Users of Affected Areas

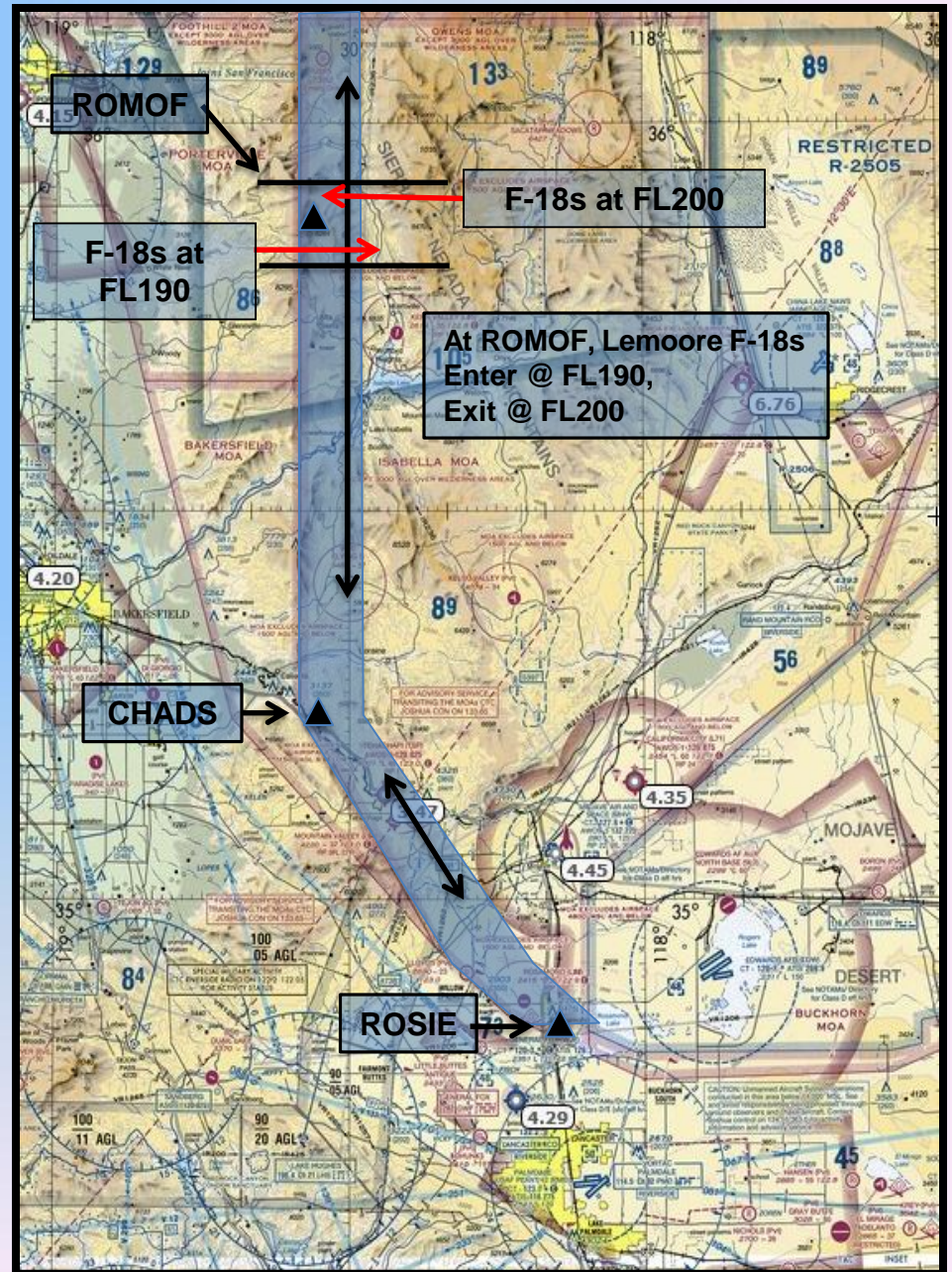




# R-2508 Annual Tanker Briefing

## Dragon Transition (DT)

- Suggested route for U-2/ER-2s transiting Isabella
  - De-conflicts U-2/ER-2s from refueling ops
  - When feasible, not mandatory, during AR ISB ops
- Dimensions:
  - Oriented N-S, 5 miles wide, 74 miles long
- Caution:
  - DT traffic will remain at or above FL210 or at or below FL180 within 5 miles of ROMOF
- **NOTE:** The DT does not provide separation from other traffic. R-2508 is non-exclusive use, VFR, and See and Avoid.

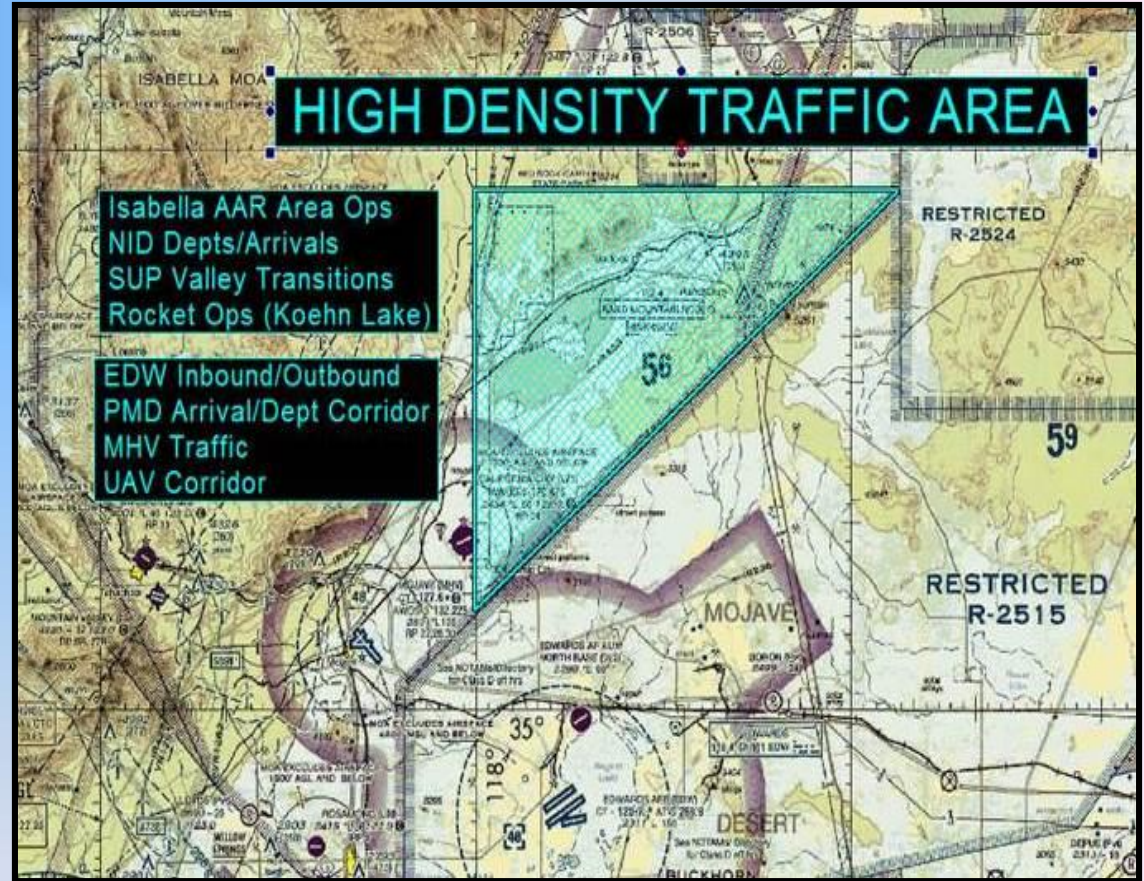




# R-2508 Annual Tanker Briefing

## High Density Traffic Area

- Defined by: 118 line on west, extended southern boundary of R-2506 on north, boundary of R-2515 on southeast
- Confluence of large variety of activities, missions, platforms
- Majority of Incident Reports occur in this area
- Aircrews should expect numerous traffic calls and request updates as needed

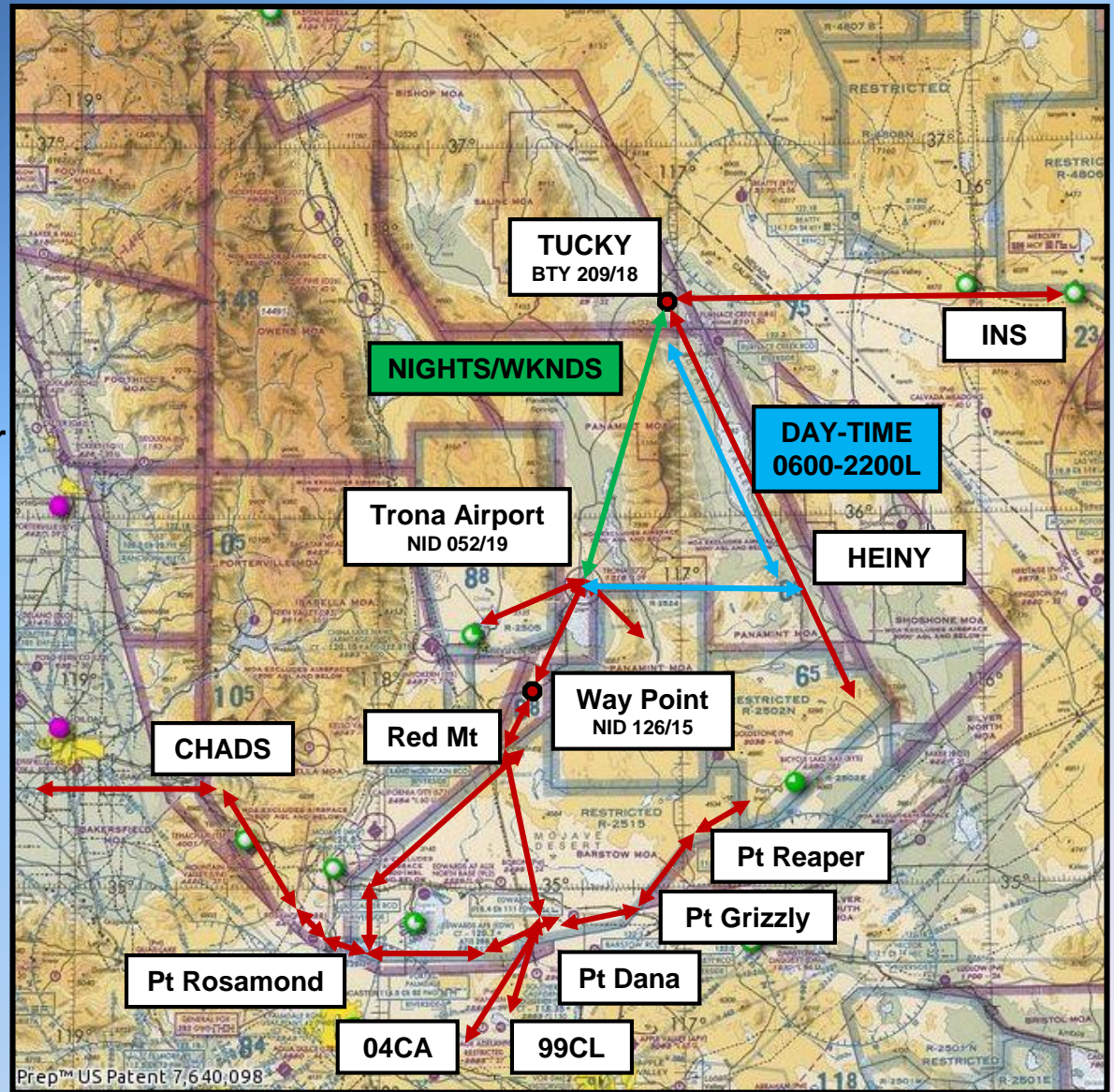




# R-2508 Annual Tanker Briefing

## UAS/RPA Transition Routes

- All Transitions flown at FL190 or FL200 Correct Alt/Direction of Flt
- GREEN RTE: Authorized only after normal flying complete Mon-Fri, weekends, or FL400 and above.
- BLUE RTE: For use during normal Flt Ops Mon-Fri
- R-2505 – R-2524 Transitions:
  - Authorized directly across Trona Corridor (no loitering)
  - Min Alt: FL180
  - Mode 3 & ATC com required





# R-2508 Annual Tanker Briefing

## R-2508 Complex Daily Brief Sheet

- What's going on the next day
- Link 16 & SADL Status Advisories
- AAR Activity/UAS Transitions
- TFRs/LFEs/small UAS Activity
- Unusual/Special Operations
- Future Operations



**R-2508 COMPLEX DAILY BRIEF SHEET**  
 DOES NOT INCLUDE ACTIVITIES SCHEDULED WITHIN INTERNAL RESTRICTED AREAS  
 R-2508 Website <http://www.edwards.af.mil/r-2508.asp>

R-2508 CC

LARGE FORCE EX

R-2508 Complex	ALTITUDE
050300Z - 050445Z	FL290
110130Z - 110315Z	FL290
120130Z - 120315Z	FL290
130130Z - 130330Z	FL290

**R-2508 COMPLEX DAILY BRIEF SHEET**  
 DOES NOT INCLUDE ACTIVITIES SCHEDULED WITHIN INTERNAL RESTRICTED AREAS  
 R-2508 Website <http://www.edwards.af.mil/r-2508.asp>

**1-2-3 FEBRUARY 2014**

LINK 16 and SADL STATUS  
 3 FEB 14

Edwards US Link 16: <b>Operational</b> SADL: <b>Down</b>	Edwards Allied Link 16: <b>Operational</b>	Rogers Peak US Link 16: <b>Down</b>
--	---	--

Troubleshooting/Coordination & After Hours Requests: DSN: 525-7514, COMM: (661) 275-7514.  
 Email: [412tw\\_ljcc@edwards.af.mil](mailto:412tw_ljcc@edwards.af.mil) Operating Hours: M-F 0800L-1700L.

**SCHEDULED REFUELING OPERATIONS**

DATE/TIME (Z)	AREA	ALTITUDES	UNIT
011745Z - 012000Z	ARISB	FL180 - FL210	TOPS/EDW

**SPECIAL ACTIVITIES/OPERATIONS**

**AMATEUR ROCKET LAUNCHES**  
 Multiple unmanned rocket launches on Saturday, February 1st. Launch operations are from 8:00 am to 5:00 pm PST (1600Z to 0100Z), to a maximum altitude of 30,000 feet MSL. The launch location is North-East of Koehn Dry Lake, Edwards VOR EDW 336° Radial 23 NM (EDW336023), Latitude 35° 21' 12" North, Longitude 117° 48' 25.80" West, and 3 nautical mile radius.

**FUTURE OPERATIONS**

**UAS TRANSITION**

GRAY BUTTE TO R2505/NID	ALTITUDE	RETURN	ALTITUDE	CALL SIGN
050815Z - 050845Z	FL200			VEGAS07

**\*\* INDICATES CHANGES**  
 For more detailed information concerning any of the above information, contact the R-2508 Central Coordinating Facility at DSN: 527-2508, COMM: (661) 277-2508.

CREECH TO 02N	ALTITUDE	RETURN	ALTITUDE	CALL SIGN
031730Z-031800Z	FL200	040200Z-040230Z	FL190	REAPER 1
031530Z-031600Z	FL200	040500Z-040530Z	FL190	GRIM 1
041730Z-041800Z	FL200	050200Z-050230Z	FL190	REAPER 1
041530Z-041600Z	FL200	050500Z-050530Z	FL190	GRIM 1
051730Z-051800Z	FL200	060300Z-060330Z	FL190	REAPER 1
051530Z-051600Z	FL200	060500Z-060530Z	FL190	GRIM 1

**\*\* INDICATES CHANGES**  
 For more detailed information concerning any of the above information, contact the R-2508 Central Coordinating Facility at DSN: 527-2508, COMM: (661) 277-2508.



# R-2508 Annual Tanker Briefing

## IFR Flight Planning

- Flight Plans should be filed with 2 separate legs...
- Leg 1: Departure point, route of flight, R-2508 entry point, R-2508 as destination.
- Leg 2: R-2508, R-2508 exit point, flight route, destination airport/fix
- Do not file a delay in the Complex
- Filing a delay may result in the loss of the second half of your flight plan
- May result in extensive delay in receiving IFR Clearance out of area



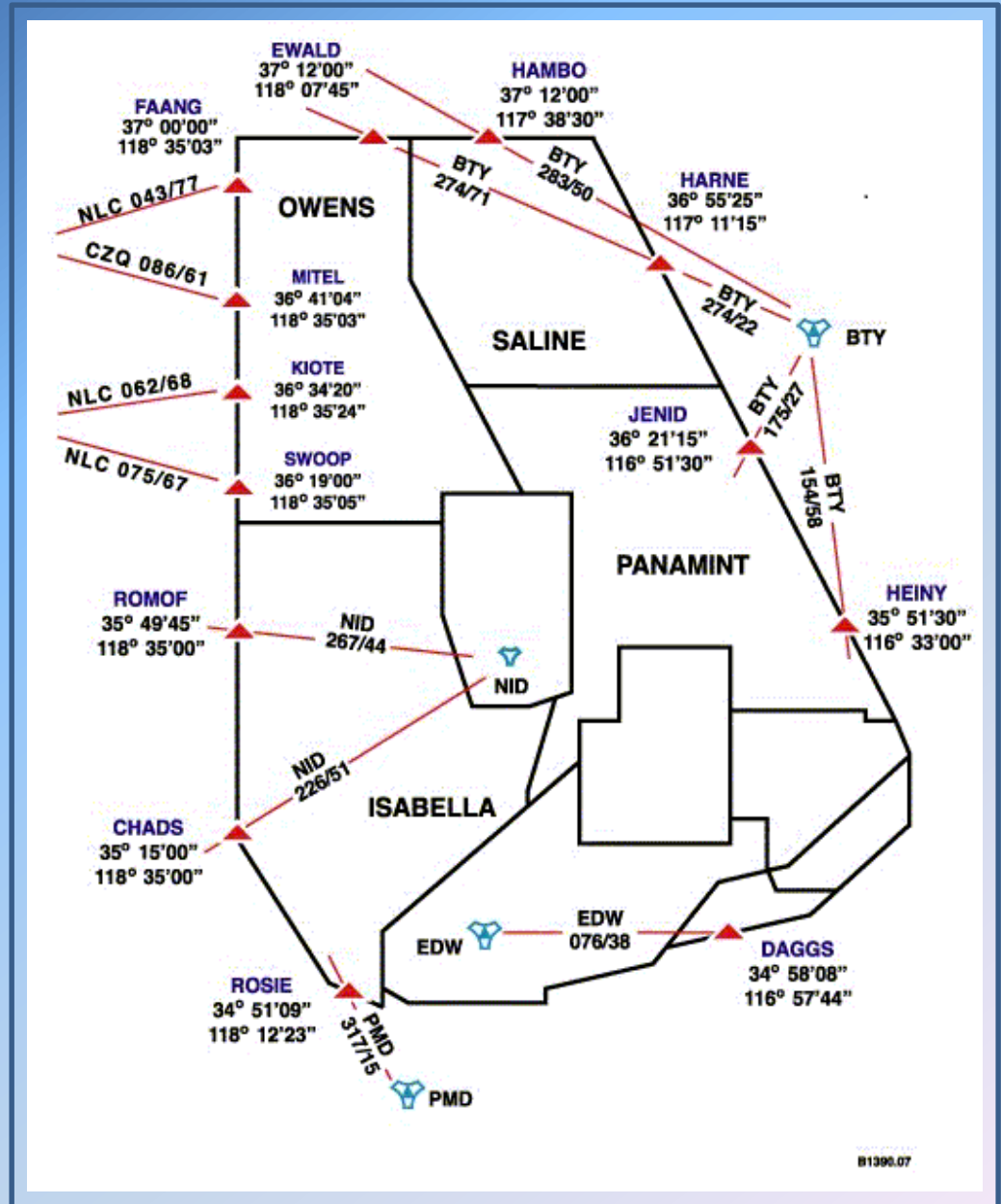
The image shows two overlapping flight planning forms. The top form is DD Form 175 (MAY 86), titled 'FLIGHT PLAN'. It includes sections for 'BASE OPERATIONS USE', 'REMARKS', 'HANK AND HUNOR CODE', 'FUEL ON BOARD', 'SIGNATURE OF APPROVAL AUTHORITY', 'DUTY PILOT COMMAND', 'CREW/PASSENGER LIST', 'WEATHER', 'PILOT BRIEFING', 'STOPOVER', 'DEPARTURE POINT', 'DEPARTURE TIME', 'CRUISING ALTITUDE', and 'SPECIALIST INITIALS'. The bottom form is FAA Form 7233-1 (6-21) Electronic Version (Adobe), titled 'FLIGHT PLAN'. It includes sections for '1. TYPE', '2. AIRCRAFT IDENTIFICATION', '3. AIRCRAFT TYPE/SPECIAL EQUIPMENT', '4. TRUE AIRSPEED', '5. DESTINATION', '6. ROUTE OF FLIGHT', '7. FUEL ON BOARD', '8. COLOR OF AIRCRAFT', '9. EST. TIME ENROUTE', '10. ALTERNATE AIRPORT(S)', '11. REMARKS', '12. PILOTS NAME, ADDRESS & TELEPHONE (OPTIONAL)', '13. DESTINATION CONTACT/TELEPHONE (OPTIONAL)', '14. NUMBER ABOARD', and '15. FSS ON ARRIVAL'. Both forms include a 'CIVIL AIRCRAFT PILOTS' warning at the bottom.



# R-2508 Annual Tanker Briefing

## Entry/Exit Points Flight Plan Entries...

- Use Complex entry/exit points during flight planning to alert Joshua/Center of your intentions.
- FAANG/MITEL/KIOTE/SWOOP ROSIE/DAGGS can be filed by name (others by coords or RAD/DME)
- \*NID TACAN is unmonitored when China Lake airfield is closed.





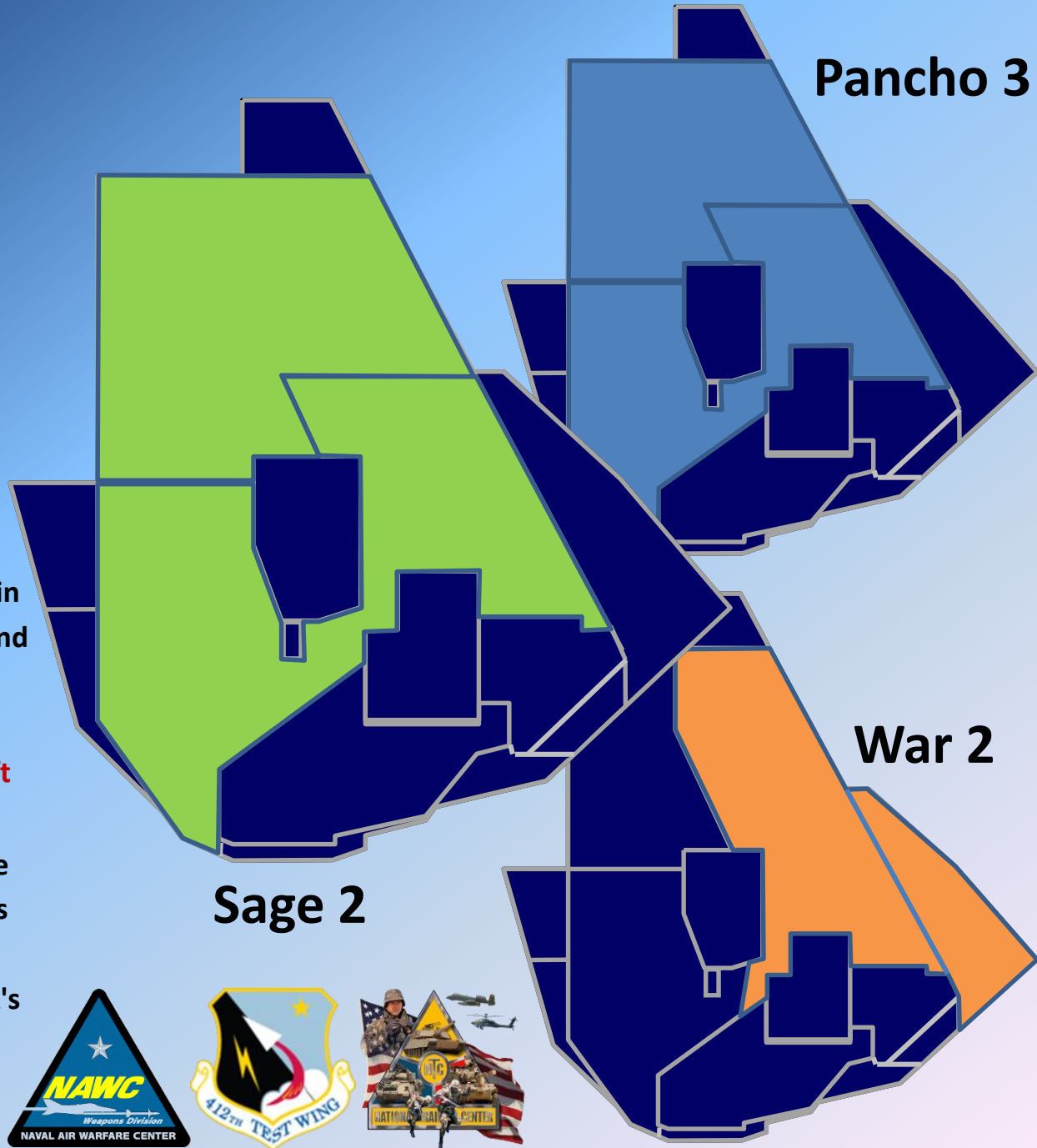
# R-2508 Annual Tanker Briefing

## Complex Clearances

**SAGE 2:** Isabella, Owens, Saline, and Panamint, FL290 and below.

**PANCHO 3:** Clearance to operate within Isabella and Panamint work areas at and below FL500, and Owens and Saline work areas at and below FL290... **Only EDW, NID, PMD, and NLC based aircraft are authorized a PANCHO 3.**

**WAR 2 Clearance:** Clearance to operate in the Saline and Panamint Work Areas at and below FL290, Shoshone MOA, and Shoshone North and South ATCAA's at and below FL230.







# R-2508 Annual Tanker Briefing

## R-2508 Scheduling

CCF Office Hours - Monday thru Friday  
0600-1800L, excluding holidays

- Schedule NLT 1600L Day Prior
- Schedule NLT 1600L Friday for Weekend Operations
- After hours schedule changes: Call CCF After Hours Number 1-866-805-2851
- Include internal restricted areas scheduled with applicable Using Agency





# R-2508 Annual Tanker Briefing

## Scheduling

Why CCF Needs your Airspace  
Request Form NLT 1600L Day Prior  
(Friday for Weekends)

Airspace Activation, Release and  
Recall Information is sent to  
Los Angeles Center NLT 1700L

**Off Station Users “Must be briefed  
& schedule R-2508 through CCF”**

Late scheduling could result in  
Mission Loss or Delay

**R-2508 DAILY ACTIVATION NOTIFICATION**  
16 April 2010

AREA	FROM	TO	OVERFLIGHT ALT	REMARKS
02E		07000	240	
		07100	300	
		07000	HOT	
		07110	HOT	
		07110	HOT	
			RLSD	
			NOT RLSD	
			RLSD	

**R-2508 CENTRAL COORDINATING FACILITY**  
EDWARDS AIR FORCE BASE, CALIFORNIA  
**AIRSPACE “RELEASE AND RECALL”**  
After Hours Phone Number: 1-866-805-2851

Page 2 of 2

II. (Contd.) MDA/ATCAA Release and Recall

AREA	ACTIVATED FROM	ACTIVATED TO	AT/OR BELOW ALT	REMARKS
Panamint	090100	090200	300	
	090200	090500	400	
	090500	090515	290	
	090515	090530	130	
	090530	090600	300	
	090100	090200	400	
Saline	090200	090500	300	
	090500	090515	290	
	090515	090530	130	
	090530	090600	300	
Shoshone MDA	090200	090500	300	
Shoshone North ATCAA	090200	090500	300	

**R-2508 CENTRAL COORDINATING FACILITY**  
EDWARDS AIR FORCE BASE, CALIFORNIA  
**AIRSPACE “RELEASE AND RECALL”**  
After Hours Phone Number: 1-866-805-2851

Page 1 of 2

I. Restricted Area Release and Recall for period starting 090100Z April 2010

AREA	RELEASED FROM	RELEASED TO	AT/OR ABOVE ALT	REMARKS
R-2502E	090100	091300		
R-2502N	090100	091300	240	
R-2502A	090100	091300	290	
R-2505	090100	091300	RLSD	
ITK SHELF	090100	091300	110	
R-2506	090100	091300	RLSD	
R-2508	090100	091300	RLSD	
R-2515	090100	091300	RLSD	
	090100	091300	RLSD	
R-2524	090401	090400	HOT	
	090415	090614	HOT	
	090701	090700	060	
	090100	091300	HOT	
			060	
			050	

II. MDA/ATCAA Release and Recall

AREA	ACTIVATED FROM	ACTIVATED TO	AT/OR BELOW ALT	REMARKS
Barstow East ATCAA	090100	090515	230	
Barstow MDA	090100	090515	180	
Barstow West ATCAA	090100	090515	300	
Bishop MDA	090100	090530	180	
Buckhorn MDA/ATCAA	090230	090530	180	
Isabella	090500	090500	300	
	090100	090530	300	
	090330	090330	100	
	090500	090500	420	
	090515	090515	400	
	090530	090530	300	
Owens	090100	090600	290	
	090330	090330	130	
	090500	090500	420	
	090515	090515	400	
	090530	090530	300	
	090600	090600	290	
			130	





# R-2508 Annual Tanker Briefing

## Scheduling

- Scheduling data used to Generate ATC Flight Plan Information and Flight Progress Strip for Joshua
- Flight Strip is Your Ticket for entry into the Complex
- Use R-2508 Complex Airspace Request Form and Submit via Email (no fax please)
- Units will receive return acknowledgement
- Changes to received schedules MUST be called in, emailed to CCF



AGR011		2145	S, T, SHN, Ø2N, Ø2E, SHS, SH	29Ø		
F16	LSV					
1F3Ø3824G33891						

RADER51		153Ø	I, O, S, T, BI	29Ø		
F18	NLC					
1F3Ø3456G33851						

XPERT11		15ØØ	I, O, S, T	35Ø		
F18	NLC					
1F3Ø3486G33852						





# R-2508 Annual Tanker Briefing

## SITREP

(R-2508 Situation Report)

- Official Communication
- Official Response
- Don't wait too long...

2010-04-12 15:25 6612774798 P 2/2

**R-2508 SITUATION REPORT**

FROM: (OPTIONAL) LHO (MID) 452 AMW/SEF  
DSN: 447-4481  
TO: R-2508 Central Coordinating Facility  
100 E. Sparks Dr.  
Edwards AFB CA 93524-8090  
DSN: 527-2508 FAX: 527-4798

DATE RECEIVED: 4-12-2010  
DATE OF REPORT: 4-12-2010

DATE/TIME SITUATION OCCURRED: MARCH 31, 2010 1400L  
TYPE AIRCRAFT: C-17  
CALL SIGN: SLAM  
FREQUENCY: 124  
ALTITUDE:  
NARRATIVE:

LOCATION SITUATION OCCURRED: BEARING: MOONEN  
OTHER AIRCRAFT INVOLVED: MOONEN  
OTHER CALL SIGN: MOONEN

2010-04-12 15:25 6612774798 P 2/2

**R-2508 SITUATION REPORT**

FROM: (OPTIONAL) Frontline Manager Joshua Approach  
TO: R-2508 Central Coordinating Facility  
100 E. Sparks Dr.  
Edwards AFB CA 93524-8090  
DSN: 527-2508 FAX: 527-4798

DATE RECEIVED: 08/19/09  
DATE OF REPORT: 08/19/09

DATE/TIME SITUATION OCCURRED: 08/19/09 14:49Z  
LOCATION SITUATION OCCURRED: IYK / Panamint  
OTHER AIRCRAFT INVOLVED: COSO31 F18  
SIGN (S) IF KNOWN:  
AG AGENCY: Joshua Approach  
RECCURRENCE: Add additional sheets as

DATE RECEIVED: 08/19/09 14:49Z  
DATE OF REPORT: 08/19/09

DATE/TIME SITUATION OCCURRED:  
LOCATION SITUATION OCCURRED:  
OTHER AIRCRAFT INVOLVED:  
OTHER CALL SIGN(S) IF KNOWN:  
CONTROLLING AGENCY:

NARRATIVE: (Be as complete as possible. Include recommendations to prevent recurrence. Add additional sheets as necessary.)

Return by Fax: 661-277-4798, DSN 527-4798 or E-mail: 2508ccf@edwards.af.mil





# R-2508 Annual Tanker Briefing

## What's Available Online...

- R-2508 Daily Flying Schedule posted online Monday Thru Friday at 0700L
- Includes Work Areas and Mission Profiles as provided on R-2508 Airspace Request Form
- Access requires .mil email address and CAC log on



UNCLASSIFIED

Site Actions Browse Page

R-2508 Complex Enhanced Advisory Service

Home

Libraries  
AFKN\_Docs

Lists  
Announcements  
Calendar

Links  
Tasks

Discussions

Recycle Bin  
 All Site Content

Image Viewer

To link to an image, open the tool pane and then type a URL in the **Image Link** text box.

Welcome to your site

AFKN\_Docs

<input type="checkbox"/> Select	Type	Name	Modified	<input type="checkbox"/> Modified By
	Folder	R-2508 24 Hour Schedule	5/23/2013 21:23	Blankenship, Andrew D CTR USAF AMC AMC/AFLCMC ESC HIB ADM
	Folder	R-2508 Daily Brief Sheet	5/23/2013 21:23	Blankenship, Andrew D CTR USAF AMC AMC/AFLCMC ESC HIB ADM
	Folder	R-2508 Documents	5/23/2013 21:23	Blankenship, Andrew D CTR USAF AMC AMC/AFLCMC ESC HIB ADM
	Folder	R-2515 Documents	7/2/2013 11:05	SANDERS, MARVIN D CIV USAF AFMC 412 OSS/OSCC
	Folder	Sidewinder Low Level Route	5/23/2013 21:23	Blankenship, Andrew D CTR USAF AMC AMC/AFLCMC ESC HIB ADM
	Image	SAMPLE dd2875	8/13/2013 11:00	SANDERS, MARVIN D CIV USAF AFMC 412 OSS/OSCC

Add document

## AFNET EIS SharePoint Account for CCF Online Information - 24 Hour Schedule & Daily Brief Sheet:

<https://USAF.DPS.MIL/TEAMS/12162>

**Non-USAF agencies must setup an AFNET EIS Sharepoint Account.**

- Contact the 412th OSS IAO at DSN: 525-4269 or COMM: (661) 525-4269.
- Requirements: A current Information Awareness training certificate
- Complete DD Form 2875.

Privacy Notice | WFE005





R-2508  
Annual  
Tanker  
Briefing

# R-2508 Central Coordinating Facility



## Questions?

- Co-Located with Joshua Approach
- Here to Support your Operations
  - DSN 527-2508 or Commercial 661-277-2508
  - [2508ccf@us.af.mil](mailto:2508ccf@us.af.mil)
  - Online Information
    - <http://www.edwards.af.mil/Home/R-2508>
    - <http://USAF.DPS.MIL/TEAMS/12162>

